

Water Leakage Sensor



Please read the user manual carefully before operating the device. The guide picture is provided for reference only; refer to the actual product for accuracy.

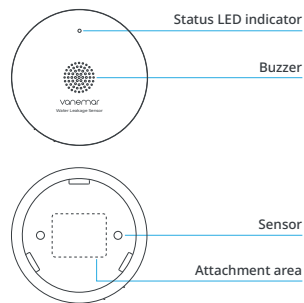
1

1 Product Introduction

Vanemar Water Leakage Sensor, utilizing advanced Zigbee wireless technology is designed to detect the presence of leaked or flooded water in boats. When water is detected, it promptly triggers an alarm and sends alarm notifications to the user via Vanemar app. Thanks to its high precision, sensitivity, and ability to operate with low energy, this sensor maintains optimal stability and performance over extended periods.

It is primarily designed to detect undesirable leaks in boat bilges but is also suitable for use in kitchens, bathrooms, and any other locations on the boat where water leaks can cause issues. Simply put, it can be used anywhere you would want to be notified of water contact.

2 Illustrations



2

3 Technical Parameters

Working voltage: DC3V (CR17335 or CR123A battery)

Alarm indication: Red LED Indicator

Alarm sound: >75dB

Networking: Zigbee 3.0

Network Distance: ≤80m (distance may vary depending on surrounding materials)

Working temperature: 0°C ~ 50°C

Working humidity: <95%RH (no condensation)

Battery life: 2 years (battery life varies depending on actual use)

Dimensions: \$69.0mm XH27.6mm

Dust and Waterproof: IP67 Certified

3

4 Functional Description

1. When the sensor detects the presence of water, its red LED indicator will rapidly flash, accompanied by brief, sharp "beep" alarm sounds. Once the sensor no longer detects any water, it will revert to its standard operating status.

2. Freezing temperature notification is supported. ??

3. When an alarm is triggered, a hush function can be activated remotely via the app. The hush period lasts approximately 10 minutes. If water leakage is still detected after 10 minutes, the alarm will resume.

4

5 Functional Description

LED Indicator	Product Status	Alarm Sound
Green LED indicator flashes quickly	LED Indicator the network	-
Green LED indicator flashes slowly	Quitting the network	-
Green LED indicator keep on for 3 seconds and then goes off	Network inclusion is done	-

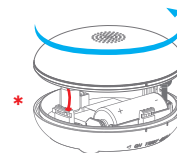
5

6 Functional Description

LED Indicator	Product Status	Alarm Sound
The red LED flashes once about every 53 seconds	Normal Working	-
Green LED indicator flashes slowly	Low Power	The buzzer beep every 53 seconds
Red LED flashes quickly	Alarm	Buzzer continuous alarm sound

6

7 Networking



1. Rotate the upper cover of the device counterclockwise and remove the battery insulation tape.

*Please handle with extreme care! There is a cable connection between the cover and the main module.

7

3-Adding Device:

Follow the app prompts and long-press the networking button for 5 seconds to initiate the device's networking state; the green LED will flash rapidly (5 times per second). A successful connection is indicated by the green LED remaining lit for 3 seconds before turning off, and the app will also notify you of a successful connection. If the connection fails, the green LED will flash slowly (2 times per second) for 3 seconds before turning off, and the app will prompt a connection failure notification. If the device cannot connect successfully within 60 seconds, the networking process will terminate, and the green LED will turn off.

• Note: If the networking button is pressed again during the networking state, the networking process will be halted, and the green LED will flash slowly for 3 seconds (2 times per second).

8

4-Align the short line mark on the top cover with the short line mark above the "OFF" position on the bottom cover. Then, rotate the top cover clockwise until you hear a "click" sound.

! Tips

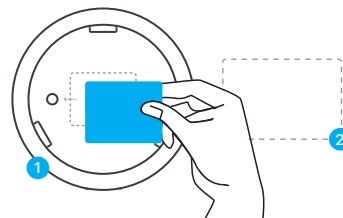
*Due to updates and upgrades to the app, this guideline may slightly differ from the actual operation. Please refer to and follow the instructions provided in the app for accurate guidance.

*If networking fails, please move the device closer to the gateway and try again.

*Before installation, please ensure to add the device to the gateway first, and then proceed to install and fix it.

10

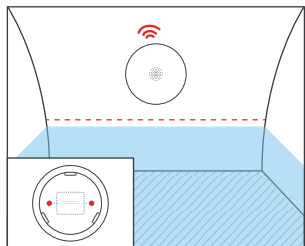
3 Application



1-Attach the small tape to the marked surface of the sensor.

2-Attach the large tape to the surface you want to secure, making sure that the surface is dry and clean.

11



1-If you wish to place the product on a vertical surface such as a wall, please ensure that the metal probes are parallel to the floor.

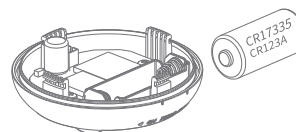
12



2- Place the product in a location where water leakage is most likely to occur.

13

8 Battery Replacement



Please handle with extreme care! There is a cable connection between the cover and the main module.

Rotate the upper cover counterclockwise to remove it, then take out the battery. Insert a new battery of the same type. After that, align the short line mark on the top cover with the short line mark above the "OFF" position on the bottom cover. Finally, rotate the top cover clockwise until you hear a "click" sound.

14

9 Networking

- Usage is prohibited in environments with high corrosive elements (such as H₂S, SO₂, Cl₂, HCl, etc.).
- Avoid exposing the product to strong shocks and vibrations, as this could damage the product and its accessories, leading to product failure.
- The product must not be cleaned with organic solvents. To clean the product surface, users may gently wipe it with a soft cloth.
- In case of product failure, please contact the Vanemar Support. Unauthorized disassembly of the product by the user is strictly prohibited.

15